



ARIADIS
Le Magellan - 470, avenue Augustin Fresnel
13857 AIX EN PROVENCE Cedex 3 - FRANCE
T +33 (0)4 42 90 40 70 - F +33 (0)4 42 90 40 71
commercial@ariadis.fr

Armaor Light

Subject : Installation Guide

I – Downloading and Installation.....	2
II – First start and activation	8
III – Armaor setting	9

Keywords : Armaor Light, Installation

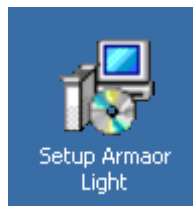
Révision	Date	Motif	Auteur

Document créé le :	Auteur :	Vérifié par :	Vérifié le :
17-06-2016	Loïc PICQUET		

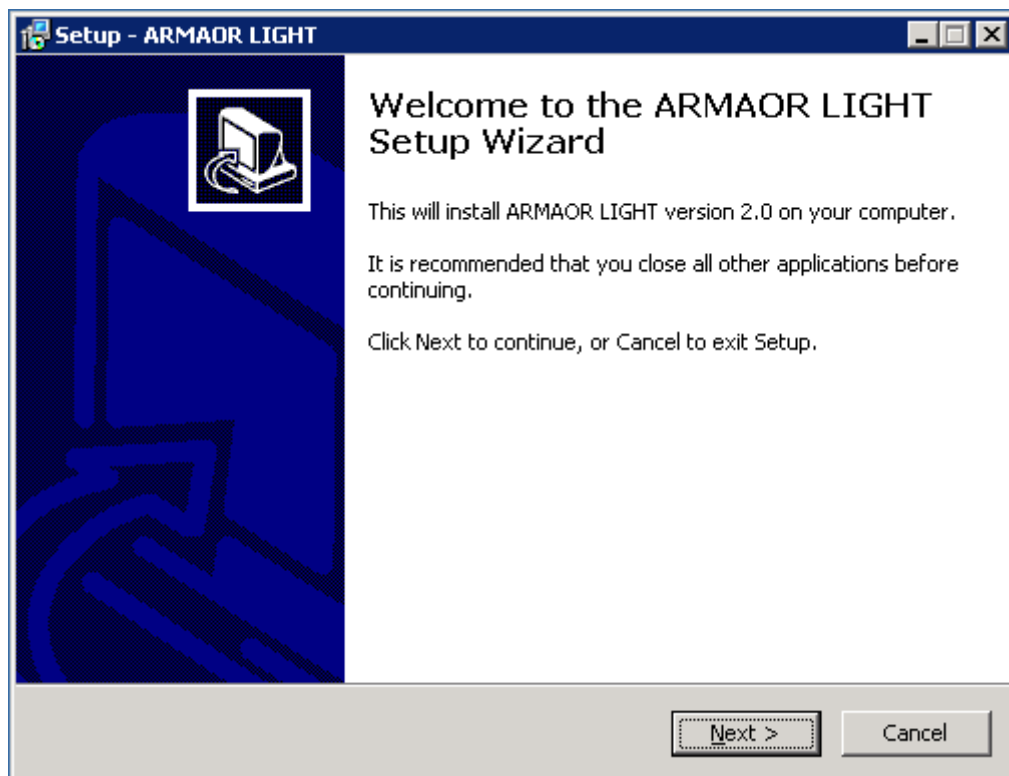
ARIADIS
LE MAGELLAN - 470 AVENUE AUGUSTIN FRESNEL.
13857 AIX-EN-PROVENCE CEDEX 3 FRANCE
TEL : +(33) 442 90 40 70
TELECOPIE : +(33) 442 90 40 71
EMAIL : support@ariadis.fr

I – Downloading and Installation

1. Download Armaor light on the website www.ariadis.fr, follow the link « Download ».
2. Execute the installation file « Setup Armaor Light.exe » :



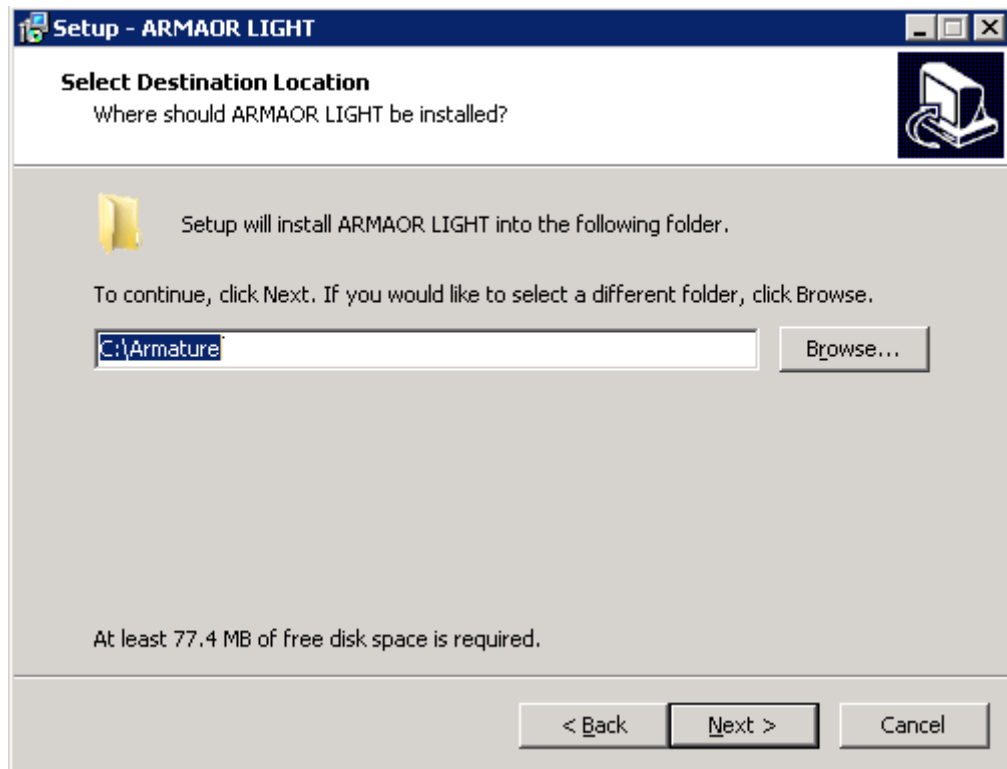
Click on « ok »



Click on « next »



ARIADIS
Le Magellan - 470, avenue Augustin Fresnel
13857 AIX EN PROVENCE Cedex 3 - FRANCE
T +33 (0)4 42 90 40 70 - F +33 (0)4 42 90 40 71
commercial@ariadis.fr



Click on « next »

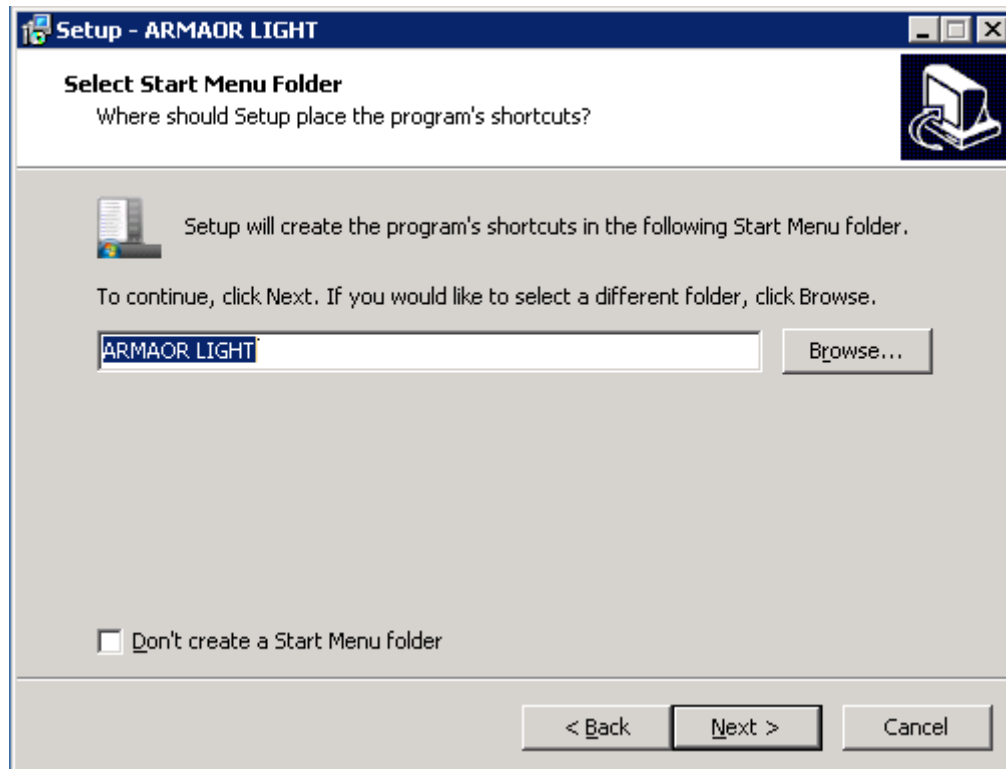




ARIADIS

Le Magellan - 470, avenue Augustin Fresnel
13857 AIX EN PROVENCE Cedex 3 - FRANCE

T +33 (0)4 42 90 40 70 - F +33 (0)4 42 90 40 71
commercial@ariadis.fr



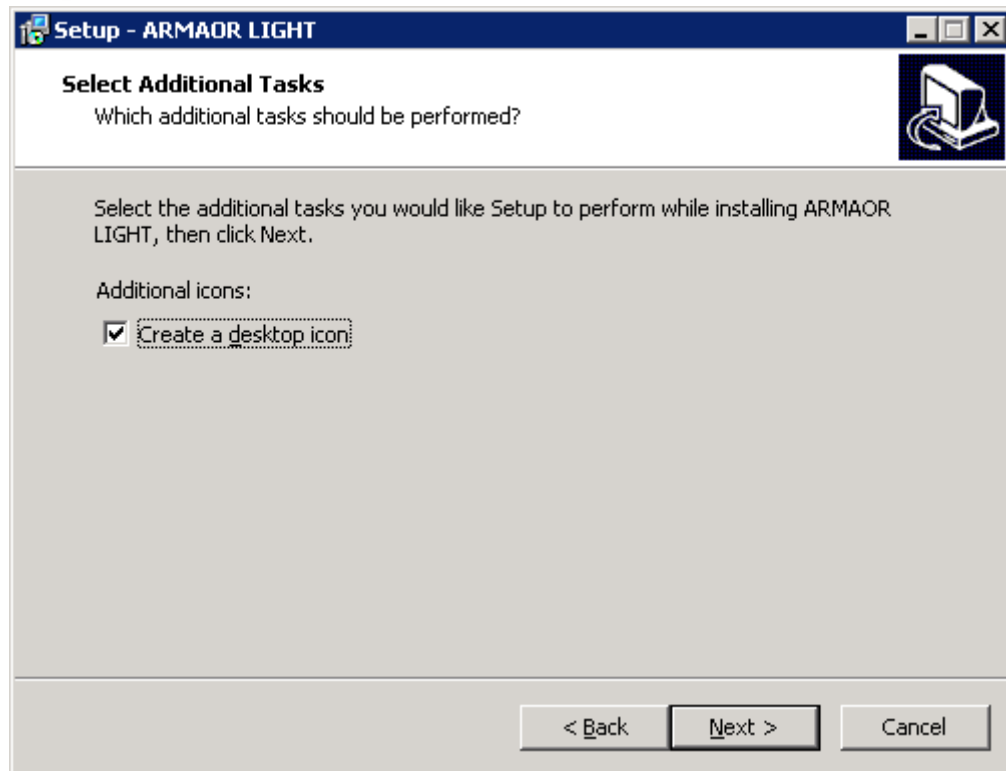
Click on « Next »



**ARIADIS**

Le Magellan - 470, avenue Augustin Fresnel
13857 AIX EN PROVENCE Cedex 3 - FRANCE

T +33 (0)4 42 90 40 70 - F +33 (0)4 42 90 40 71
commercial@ariadis.fr

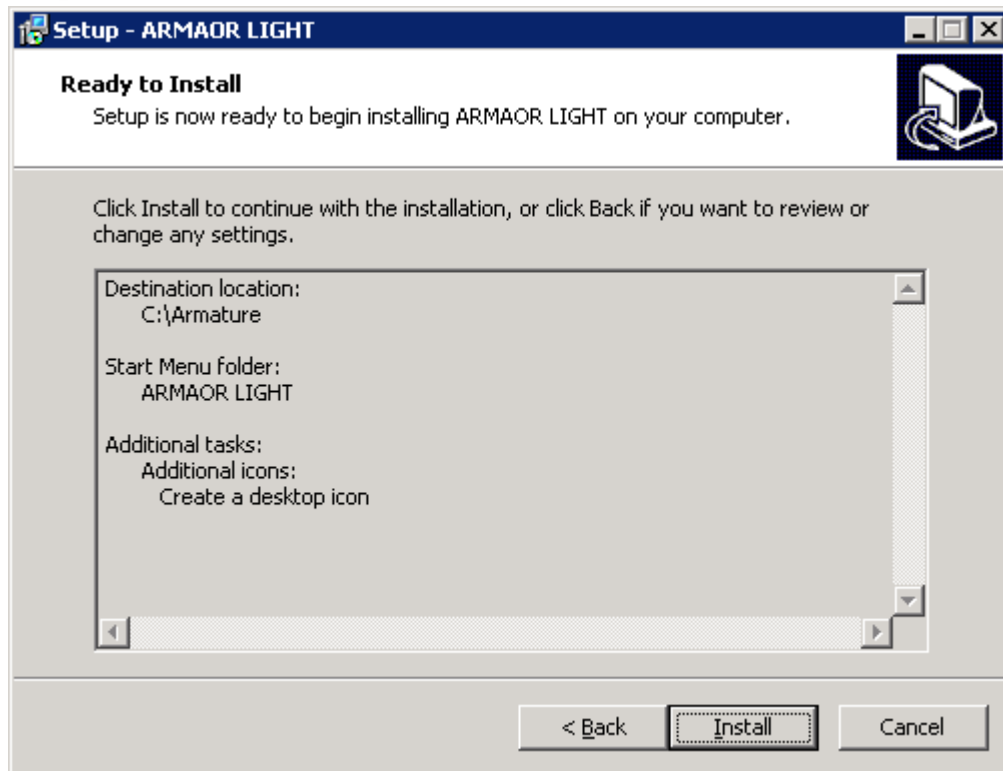


Click on « Next »



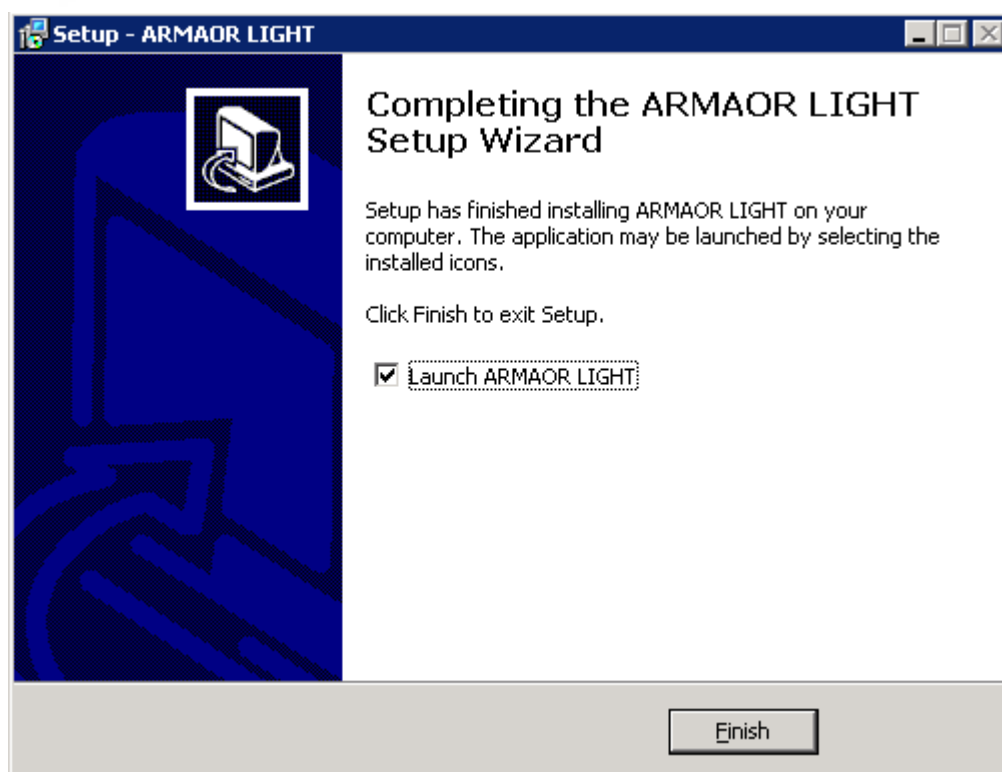


ARIADIS
Le Magellan - 470, avenue Augustin Fresnel
13857 AIX EN PROVENCE Cedex 3 - FRANCE
T +33 (0)4 42 90 40 70 - F +33 (0)4 42 90 40 71
commercial@ariadis.fr



Click on « Install ». Armaor is installing. It should only take a few seconds.





Click on « Finish ». Armaor is going to be launched automatically. You will find a shortcut on your office to launch it again later

**ARIADIS**

Le Magellan - 470, avenue Augustin Fresnel
13857 AIX EN PROVENCE Cedex 3 - FRANCE
T +33 (0)4 42 90 40 70 - F +33 (0)4 42 90 40 71
commercial@ariadis.fr

II – First start and activation

When started for the first time, you can choose the language and the norm you want to use. It is also requested to enter a password provided by Ariadis team. Contact us by phone calling +33 442904070 or thru help on line on our website www.ariadis.fr on help on line menu.



The image shows the 'Armaor Light By Ariadis' logo on the left, which includes a red stylized 'A' and the text 'Armaor Light By Ariadis' with 'Reading DateDec.dat...' below it. To the right is a 'Protection code input' dialog box. The dialog box has two sections: 'Parameters' and 'Security'. In the 'Parameters' section, 'Language' is set to 'English' (with a flag icon) and 'Standard' is set to 'British Standard : BS 8666-2005' (with a wrench and screwdriver icon). In the 'Security' section, 'Numéro de série' is 'XNDL-5092012' (with a padlock icon) and 'Password' is empty. At the bottom are 'Save' (with a green checkmark icon) and 'Close' (with a red X icon) buttons.

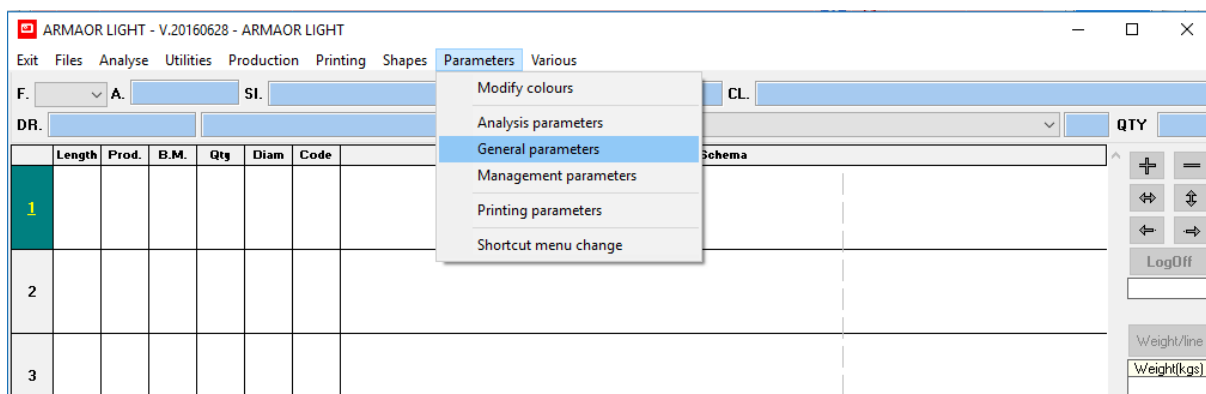




ARIADIS
 Le Magellan - 470, avenue Augustin Fresnel
 13857 AIX EN PROVENCE Cedex 3 - FRANCE
 T +33 (0)4 42 90 40 70 - F +33 (0)4 42 90 40 71
 commercial@ariadis.fr

III – Armaor setting

1. Set the Armaor software. Go in the menu « *Parameters* » then click on « *General Parameters* »:



2. Fill all the necessary fields : Name of the company, address, phone.
 Those data will be used for delivery notes editing :

System parameters

Company Functioning Technics INI parameters

Name : Abbr. Name :

Company Code : Fabric letter :

Address :

Postal code : Town :

Phone No 1 : Phone No 2 :

FAX :

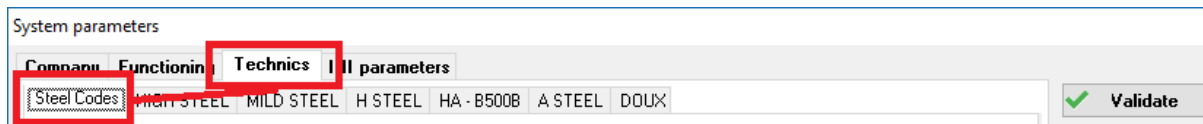
Registration number : Registration code :

LOGO

☒ Validate ☐ Cancel

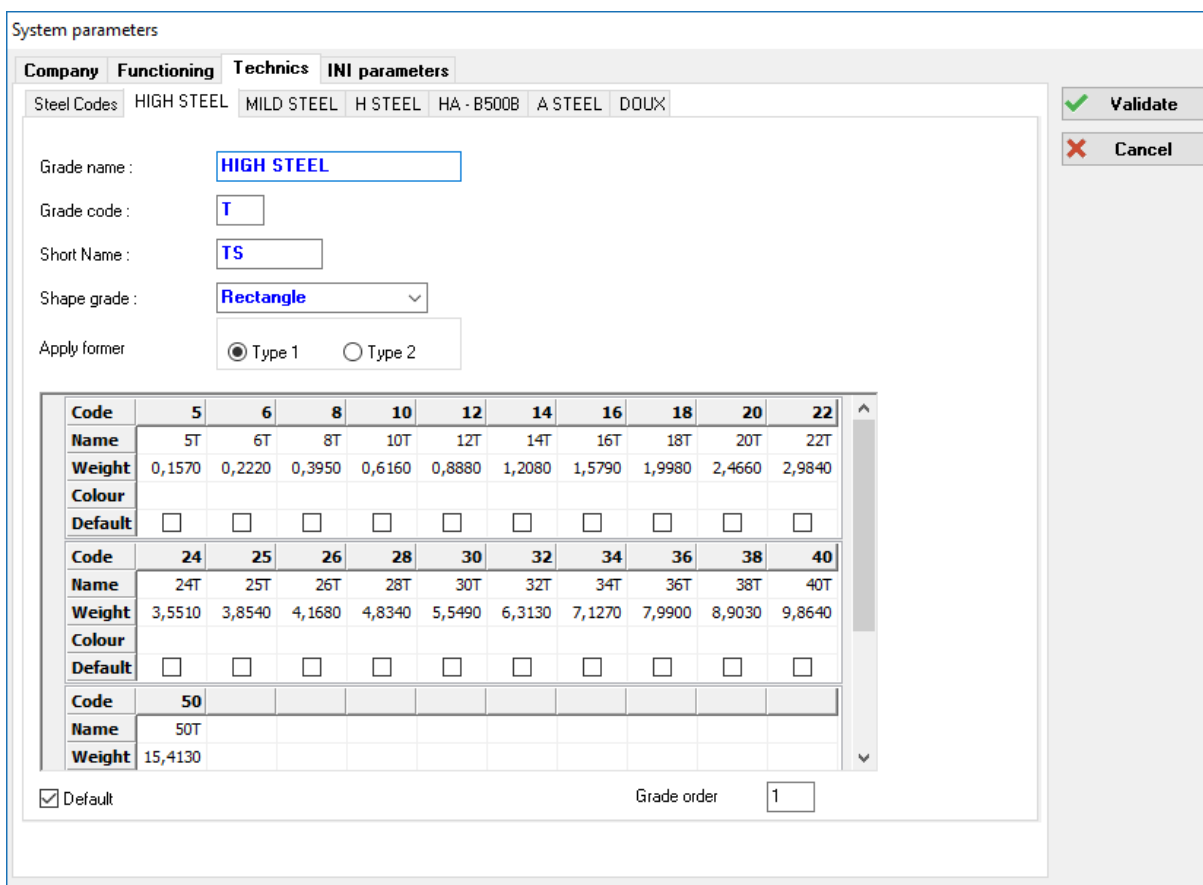


3. The « technics » tab of that same window allows you to set the various diameters. The standard parameters frequently used are already set. However, if a diameter you are using is not in the tables, please add it from the section « Steel codes »



In the following tabs, you can check that the grade tables are correctly set up and that the meter weight by diameter are right, i.e. that each data corresponds to the diameters previously entered. In the case data are different, you will have to modify them overwriting on them.

A mistake at this level could lead to contradictions in the software.



Grade name :

Grade code :

Short Name :

Shape grade :

Apply former : ☒ Type 1 ☐ Type 2

Code	5	6	8	10	12	14	16	18	20	22
Name	5T	6T	8T	10T	12T	14T	16T	18T	20T	22T
Weight	0,1570	0,2220	0,3950	0,6160	0,8880	1,2080	1,5790	1,9980	2,4660	2,9840
Colour										
Default	<input type="checkbox"/>	<input type="checkbox"/>	<input type="checkbox"/>	<input type="checkbox"/>	<input type="checkbox"/>	<input type="checkbox"/>	<input type="checkbox"/>	<input type="checkbox"/>	<input type="checkbox"/>	<input type="checkbox"/>

Code	24	25	26	28	30	32	34	36	38	40
Name	24T	25T	26T	28T	30T	32T	34T	36T	38T	40T
Weight	3,5510	3,8540	4,1680	4,8340	5,5490	6,3130	7,1270	7,9900	8,9030	9,8640
Colour										
Default	<input type="checkbox"/>	<input type="checkbox"/>	<input type="checkbox"/>	<input type="checkbox"/>	<input type="checkbox"/>	<input type="checkbox"/>	<input type="checkbox"/>	<input type="checkbox"/>	<input type="checkbox"/>	<input type="checkbox"/>

Code	50
Name	50T
Weight	15,4130

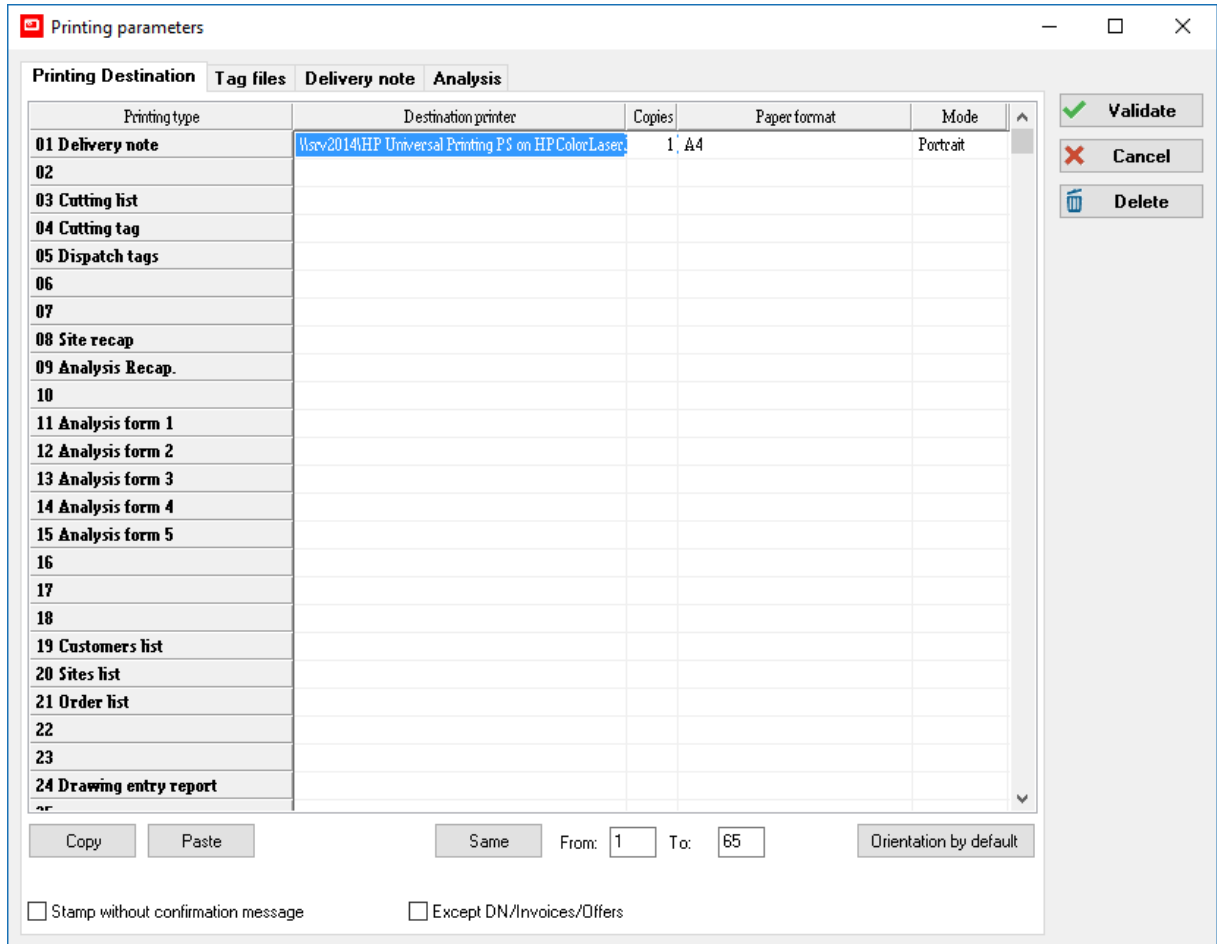
☒ Default

Grade order

Once all is set correctly, click on « validate ».

4. Now you have to set the printers.

Click on the menu « *Parameters > Printing Parameters* ». This screen shows you the possible printing list. To allocate a printer to a menu, double-click on a box from the column « *Destination printer* ».



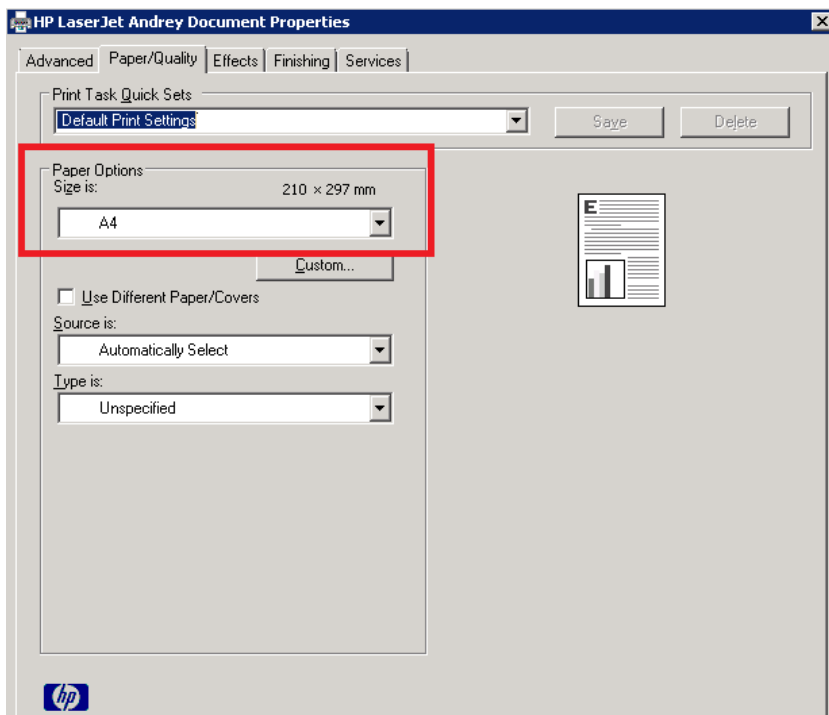
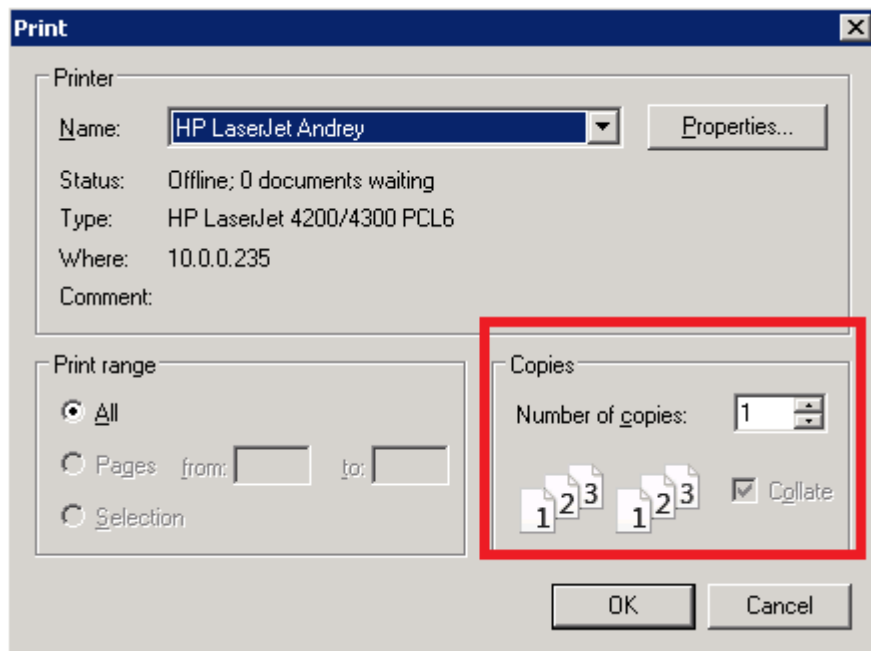
Printing type	Destination printer	Copies	Paper format	Mode
01 Delivery note	llayv2014\HP Universal Printing P5 on HP ColorLaser	1	A4	Portrait
02				
03 Cutting list				
04 Cutting tag				
05 Dispatch tags				
06				
07				
08 Site recap				
09 Analysis Recap.				
10				
11 Analysis form 1				
12 Analysis form 2				
13 Analysis form 3				
14 Analysis form 4				
15 Analysis form 5				
16				
17				
18				
19 Customers list				
20 Sites list				
21 Order list				
22				
23				
24 Drawing entry report				

Copy Paste Same From: 1 To: 65 Orientation by default

☐ Stamp without confirmation message ☐ Except DN/Invoices/Offers

Validate Cancel Delete

After having double-clicked on one box, a screen of printer selection appears. It is possible to choose the number of copy you want. For instance, if you want the delivery note in two copies, indicate 2 in the box “*number of copies*”:

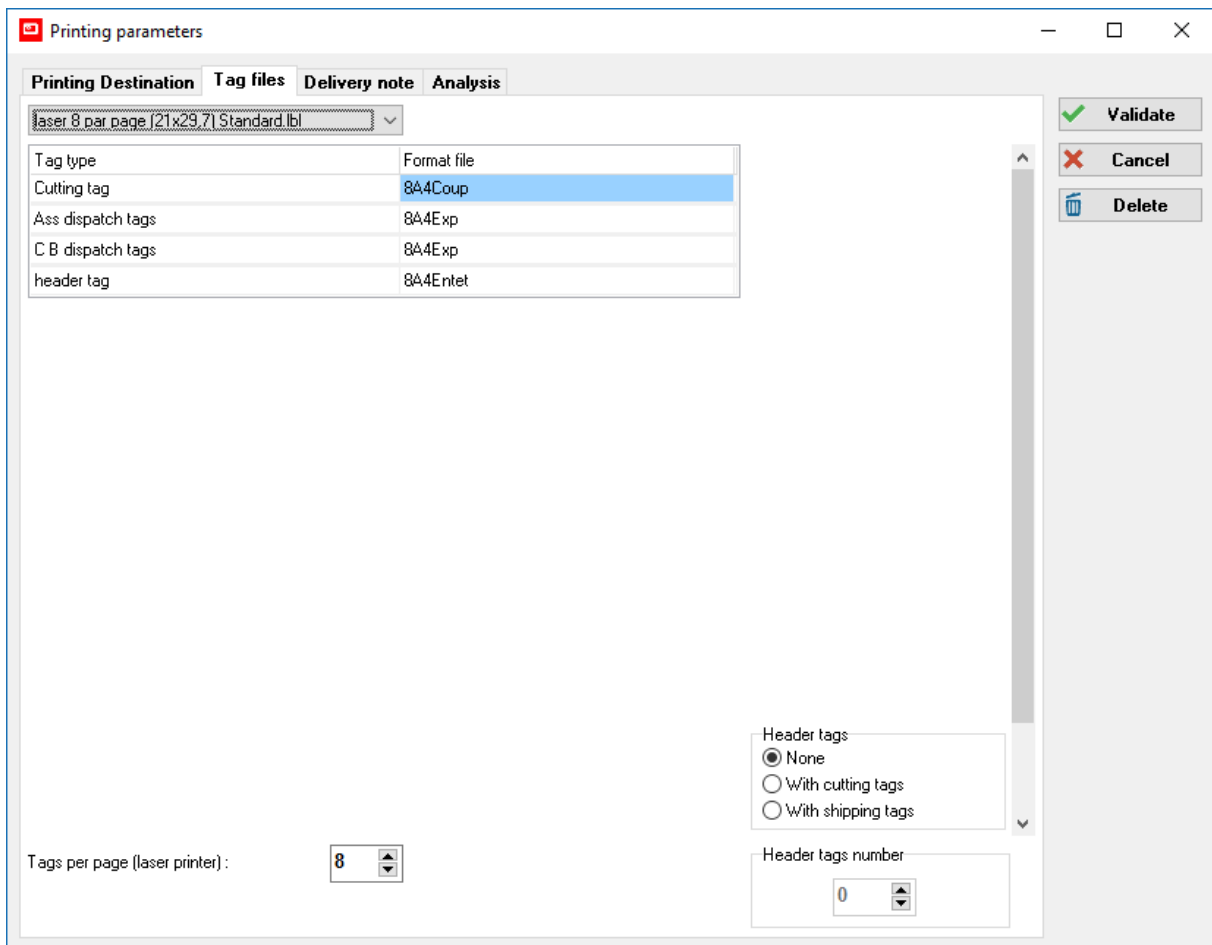


The button « *Properties* » allows to access the printer properties.

Don't forget to define the format (A4, letter ...) the orientation (portrait / landscape) and the paper tray to use. Maybe you are using a different tray for tags ?

The left example can change according to your printer's brand and model.

5. The « *Tag files* » part is to define the wanted tag format and type.
 The first field on the top left is to choose a predefined format.
 Once the choice is done, if we refer to the here below table, we will notice that the corresponding files to the various type of tags are automatically selected.
 We advise you to use a 8 tag per page format with a laser printer for a more simple use.



Tag type	Format file
Cutting tag	8A4Coup
Ass dispatch tags	8A4Exp
C B dispatch tags	8A4Exp
header tag	8A4Entet

Header tags
☒ None
☐ With cutting tags
☐ With shipping tags

Header tags number
 0

Tags per page (laser printer): 8

Buttons: Validate, Cancel, Delete



6. To finish with, you have to check the machine parameters.

A stirrup, shearline and bending machines are set by default. Check if the parameters seem Ok respecting to the machines you have. Please note that the machine parameters are used during analysis. The software will choose the most appropriate machine for each bar according to the steel diameter, grade ...

STIRRUP MACHINE - (STIRR)

SHEARLINE - (SHEAR)

CINTREUSE - (CINTR)

Default machines

Unknown used machines

Cut : SHEARLINE

Bending : CINTREUSE

Formers

Used former

Bin

Tagger opt.

General

Machine name

SHEARLINE

Label Code

SHEAR

Category

CUT

Printing Options

☒ Tags printing
 ☒ Cutting list printing

Optimization options

☐ Optimization

Supply

☐ Coil
 ☒ Straight Bar
 ☐ None

Machine Functions

☒ Cut
 ☐ Bent
 ☐ Assembled
 ☐ Arc
 ☐ 3D Bending

☐ Tagger/Marker
 ☐ Virtual
 ☐ Shape type "Circle"
 ☐ Shape type "Spiral"
 ☒ Variable shapes

Overall dimensions (cm) :

Tot length

Min

10

Max

30000

Diameter selection

	5	6	8	10	12	14	16	18	20	22	24
T	5T	6T	8T	10T	12T	14T	16T	18T	20T	22T	24T
M	5M	6M	8M	10M	12M	14M	16M	18M	20M	22M	24M
H	5H	6H	8H	10H	12H	14H	16H	18H	20H	22H	24H
HA	5HA	6HA	8HA	10HA	12HA	14HA	16HA	18HA	20HA	22HA	24HA
A			8A	10A	12A		16A				
DX	5DX	6DX	8DX	10DX	12DX	14DX	16DX	18DX	20DX	22DX	24DX

Capacity (kg/h) :

500

Max bend :

99

LG Cutting :

Min

0

Max

100000

Bar with 1 bend

Min

10

Max

32000

Straight Bar :

Min

10

Max

32000

Various

☐ Stock length only
 ☐ Check presence machine former
 ☐ Machine disable
 ☐ Possible cut Without bending

New

Delete

Save

Cancel



ARIADIS
 Le Magellan - 470, avenue Augustin Fresnel
 13857 AIX EN PROVENCE Cedex 3 - FRANCE
 T +33 (0)4 42 90 40 70 - F +33 (0)4 42 90 40 71
 commercial@ariadis.fr

It is also necessary to set the former you are using according to some criteria. The formers can be defined by machine in the previous window, or globally in the menu “Parameters > Production Parameters > Formers »

Please refer to Armaor help on line for further details.

Formers Diameters - Standard

Steels		Ø5	Ø6	Ø8	Ø10	Ø12	Ø14	Ø16	Ø18	Ø20	Ø22	Ø24	Ø25	Ø26	Ø28	Ø30	Ø32	Ø34	Ø36	Ø38	Ø40	Ø50
Stirrups Stirrups Pins	Type 1 (T, M, H, HA)	36	36	48	60	72	96	96	120	120	200	200	200	256	256	256	256	320	320	320	320	400
	Type 2	0	0	0	0	0	0	0	0	0	0	0	0	0	0	0	0	0	0	0	0	0
Anchorages	Type 1 (T, M, H, HA)	36	36	48	60	72	96	96	120	120	200	200	200	256	256	256	256	320	320	320	320	400
	Type 2	0	0	0	0	0	0	0	0	0	0	0	0	0	0	0	0	0	0	0	0	0
Bends	Type 1 (T, M, H, HA)	36	36	48	60	72	96	96	120	120	200	200	200	256	256	256	256	320	320	320	320	400
	Type 2	0	0	0	0	0	0	0	0	0	0	0	0	0	0	0	0	0	0	0	0	0

Reset Type selection : Bar standard OK Cancel

The setting is now over and your software is ready to be used. Please refer to the « First steps » guide to get familiar with Armaor.

